

Effect of Plant Growth-Promoting Bacteria *Bacillus amyloliquefaciens* Y1 on Soil Properties, Pepper Seedling Growth, Rhizosphere Bacterial Flora and Soil Enzymes

QAISER JAMAL, YONG SEONG LEE, HYEON DEOK JEON and KIL YOUNG KIM*

Division of Food Technology, Biotechnology and Agrochemistry, Institute of Environmentally-Friendly Agriculture, Chonnam National University, Gwangju, South Korea

*Corresponding author: kimkil@jnu.ac.kr

Electronic supplementary material (ESM)

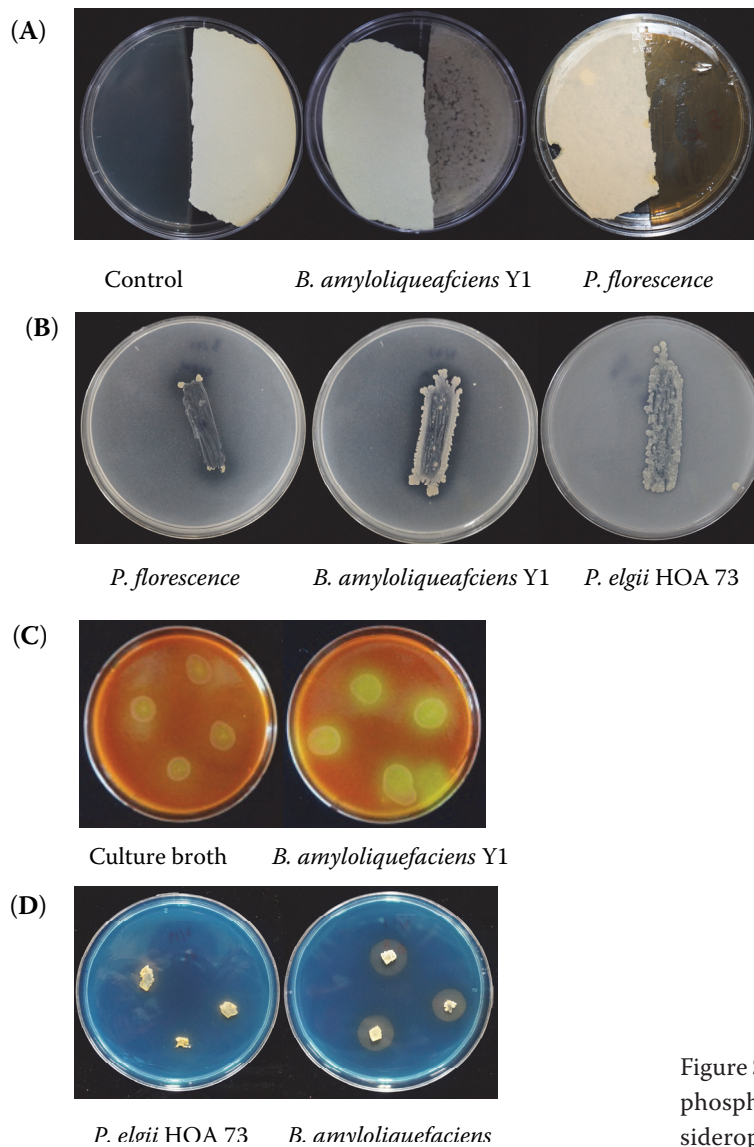


Figure S1. Plate assay for detection of HCN (A), phosphate solubilisation (B), and chitinase (C), siderophore detection assay (D)